

SONOTEC Device Drivers

Installation Guide

SONOTEC Ultraschallsensorik Halle GmbH
Nauendorfer Str. 2
06112 Halle (Saale), Germany

Phone: +49 (0)345 133 17-0
Fax: +49 (0)345 133 17-99

Email: sonotec@sonotec.de
Web: www.sonotec.eu

© 2014
SONOTEC Ultraschallsensorik Halle GmbH
All rights reserved

The content of this manual is the property of SONOTEC Ultraschallsensorik Halle GmbH and is protected by copyright. Duplication and distribution in any form, particularly reprinting, photographic, mechanical or electronic reproduction, or in the form of storage in data processing systems or data networks, is prohibited without the consent of the copyright holder.

Revision: 3.0, Date: 2014-02-12

Information is subject to change without notice.

Contents

1.	General Information to the Device Driver	4
2.	Preparatory activities.....	4
3.	Installation for Windows 7, Windows 8 and 8.1	5
4.	Installation for Windows XP / Windows Vista	8
5.	Problems	12

1. General Information to the Device Driver

The driver delivered with your SONOTEC Device supports the operating systems Microsoft Professional for Windows XP Service Pack 3, Windows Vista, Windows 7 and Windows 8.

2. Preparatory activities

⇒ Verify that you have **administrative permissions** for the installation!

⇒ Quit all other programs that you are running!

If the device was connected to the computer before, quit the Device Driver Installation Wizard. On the delivered data medium or as download you will find the file **SONOTEC-Driver-Setup.exe**

⇒ Open the file to start the installation.

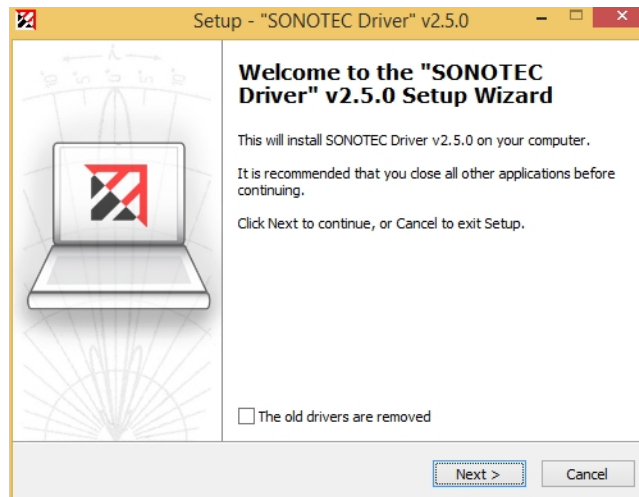
**Note**

Please note that the graphical representation of the windows can differ from the individual settings of the system.

3. Installation for Windows 7, Windows 8 and 8.1

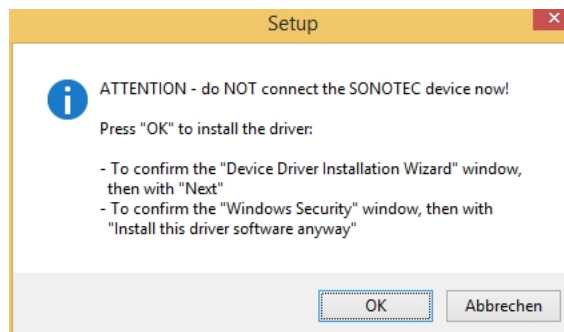
⇒ Pay attention to the instructions given in chapter 2.

After clicking on the file **SONOTEC_Driver_Setup.exe** the following window will open:



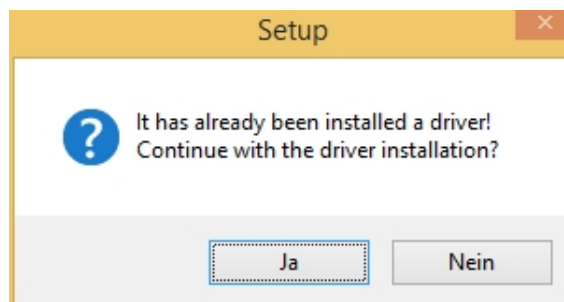
⇒ Click '**Next**', to start the installation.

⇒ Pay special attention to the instructions in the following window:



⇒ Click '**OK**' to continue the process.

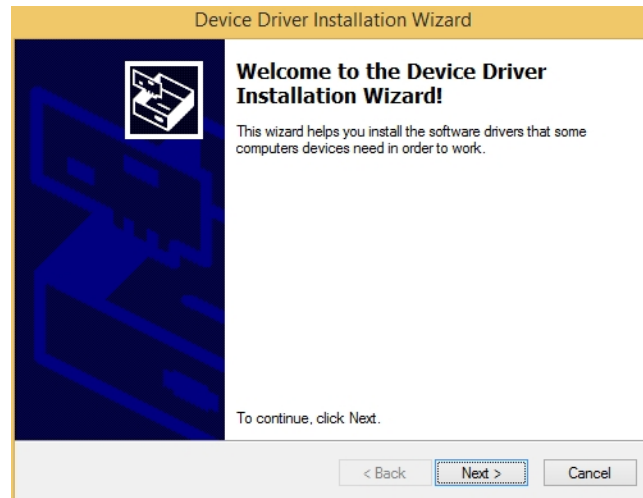
If there is already installed a FTDI Driver, the following message occurs:



The removing can be confirmed or the process can be broken off.

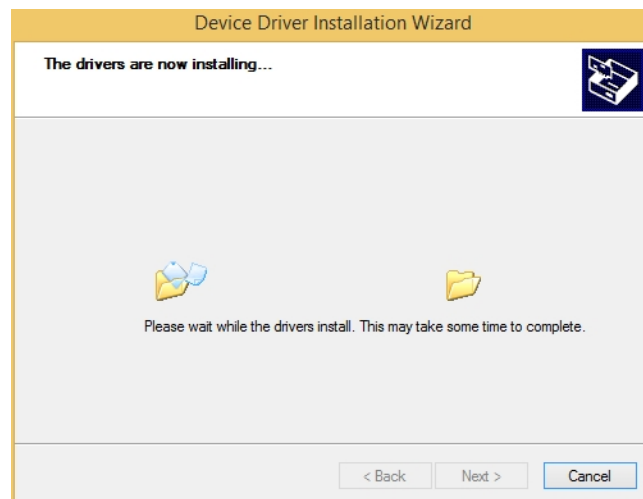
⇒ Click '**Yes**' again to continue the process.

⇒ The Device Driver Installation Wizard will open:

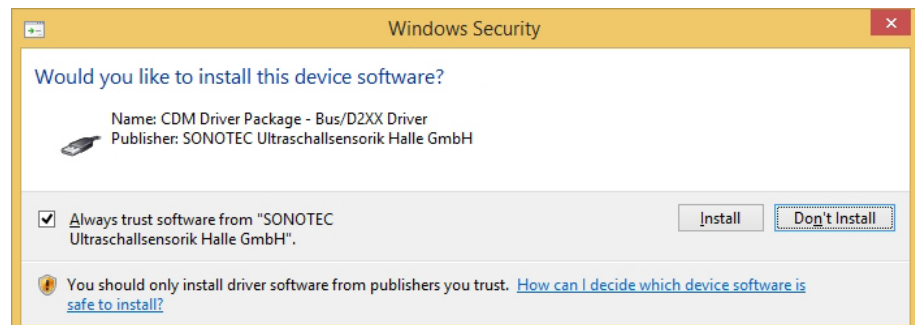


⇒ Click '**Next**'!

⇒ The following window will indicate that the installation is running:



During the installation process the following safety message will occur:

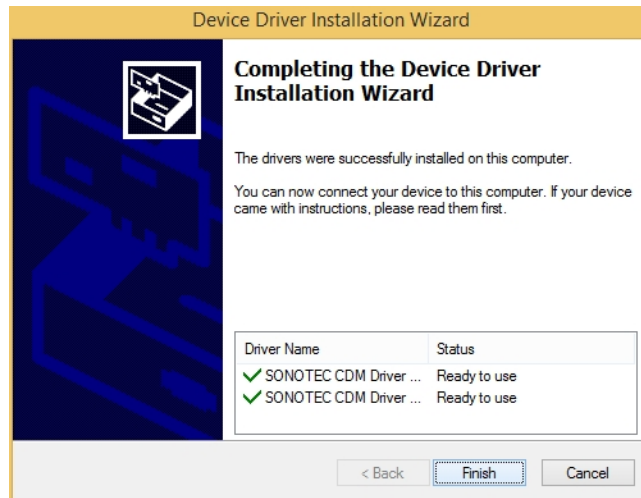


Note

If you confirm »Always trust software from 'SONOTEC Ultraschallsensorik Halle GmbH'«, the message will not occur for subsequent setups.

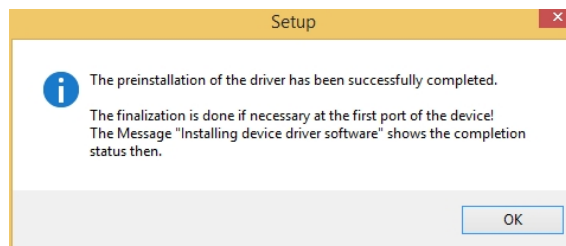
⇒ Click '**Install**'!

After the installation of the required data the following window will open:



⇒ Complete the installation by clicking **'Finish'**!

The following window indicates a successful installation:



⇒ Confirm with **'OK'**!

⇒ After restart you can connect the respective device. It will be shown in the Device Manager and is ready for use.

4. Installation for Windows XP / Windows Vista

After clicking on the file **SONOTEC_Driver_Setup.exe** the following window will open:



⇒ Click '**Next**', to start the installation!

⇒ Pay special attention to the instructions in the following window!



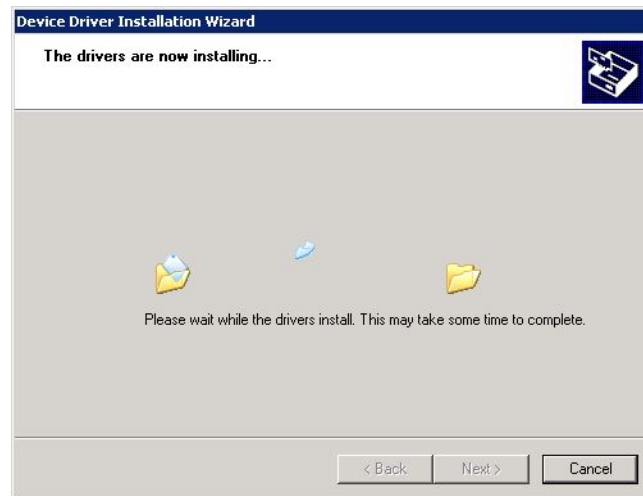
⇒ Confirm by clicking '**OK**'!

✚ The installation process has started and the Device Driver Installation Wizard will open:

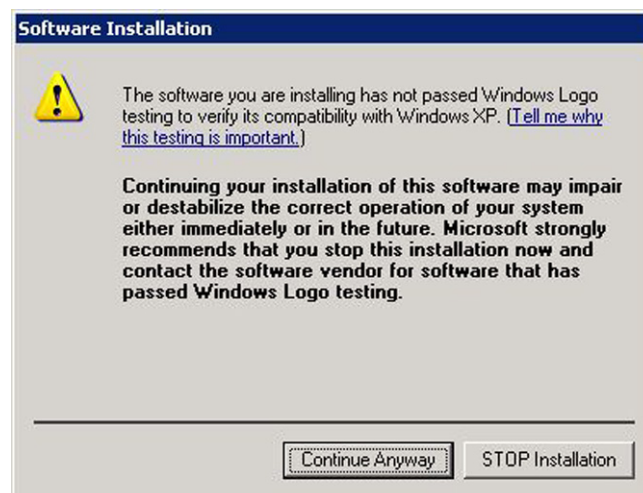


⇒ Confirm by clicking '**Next**'!

⇒ The following window will indicate that the installation process is running:



During the installation process the following safety message will occur two times:



⇒ Click '**Continue Anyway**' both times.



⇒ Complete the installation process by clicking '**Finish**'!

The following window indicates the successful installation:



Finishing the installation for Windows XP and Windows Vista

⇒ Connect the SONOTEC Device via USB cable to the Computer!

⇒ The Found New Hardware Wizard is opening.



⇒ Click '**No, not this time**' if the dialogue for Windows Updates occurs and confirm with '**Next**'.



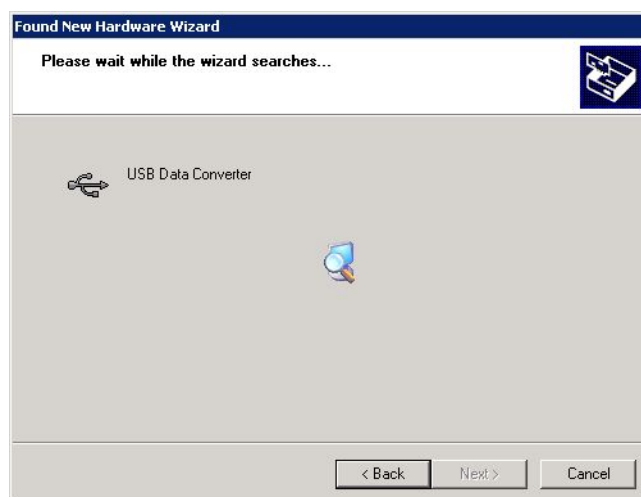
Note

Please note that the indicated designation in the window depends on the device that should be installed. The completion of the driver installation is demonstrated below for a USB Data Converter.

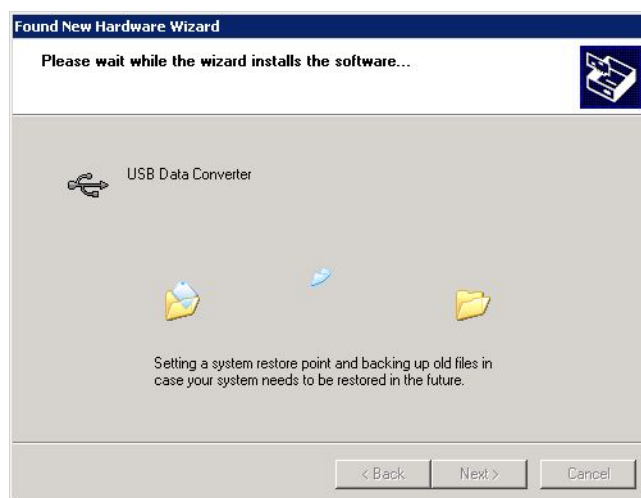


⇒ Select '**Install the software automatically**' and click '**Next**'.

⇒ The system is automatically searching for the installed driver files.



⇒ The found driver files will be installed.





⇒ Click '**Continue Anyway**', if the message to the Windows Logo testing occurs.



⇒ Complete the installation by clicking '**Finish**'!

For devices with a virtual Com Port the complete procedure will be executed again for a 'USB Serial Port'.

5. Problems

The SONOTEC devices use drivers of FTDI for the communication with the computer. These drivers are also used by many different devices. Therefore problems during operation of the SONOTEC devices on a computer together with other devices cannot be ruled out.

In case of problems please contact the SONOTEC support.